



nitidæ  
filiales & territoires

ANNUAL REPORT

**2023**

**2023** 7e year of existence for Nitidæ, is in many ways a very satisfying one for the association.

The volume of Nitidæ's activities has grown moderately over the past year: the association's total budget reached 8,046,000 € in 2023, 10% more than in 2022. Budgets committed in the countries are increasing almost everywhere, particularly in Côte d'Ivoire, where activities have grown by almost 54% in 2023 compared with 2022, totalling €2.7m. In Burkina, the volume of business remains high (€2m), followed by Mozambique (€1.1m), Madagascar (€700k) and Senegal (€300k).

In addition to the countries in which it has traditionally operated, Nitidæ is extending its territorial footprint in the Congo Basin: in Uganda, while the long-term technical assistance contract with the MNHN has been signed and operations have begun, steps have been taken to obtain a headquarters agreement in Cameroon. This reflects Nitidæ's dynamic geographical development and its desire to diversify its areas of operation. In Mali, in accordance with the decision taken at the end of 2022, Nitidæ left the country in July 2023. In Burkina Faso, despite the growth in our operations, the political and security context is deteriorating.

2023 was another particularly successful year for the association's research department. In addition to the areas of expertise on which Nitidæ is regularly consulted, Nitidæ has carried out strategic studies on behalf of public funding bodies (WB, EU, IFAD, FGEF) that can be likened to 'technical' lobbying, giving the association additional leverage.

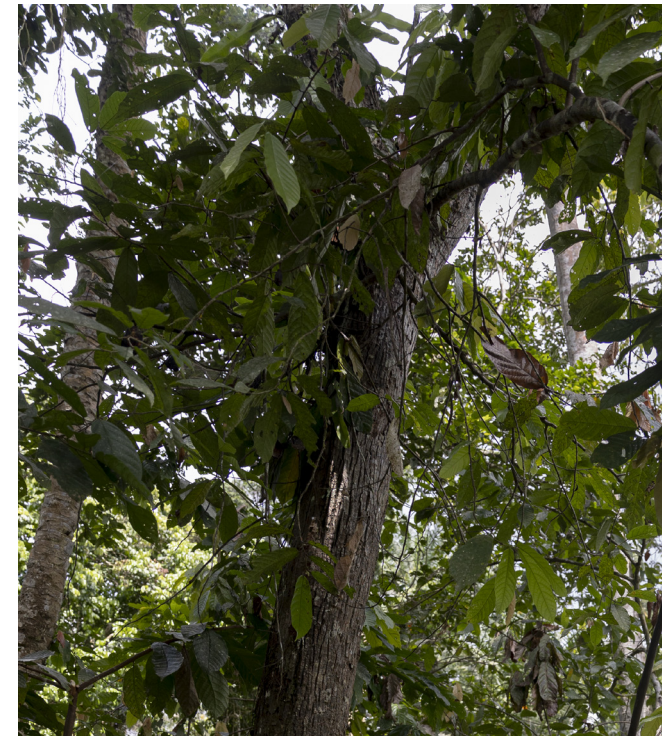
Given the growth in our teams, our operations and the requirements of our landlords, in 2023 we embarked on a major project to strengthen the association's support functions, and in particular its procedures (accounting, logistics, procurement, safety manual). This work will continue in 2024.

In budgetary terms, even if the year ended with a surplus, it was a fragile one. This weak result can be explained mainly by the increase in the association's fixed costs: new support functions, costs that cannot be re-invoiced on projects due to 'gap' periods between 2 project phases, partial absence of co-financing on certain projects forcing us to set aside provisions or even finance these projects from our own funds. Despite this, the association's overheads remain low, at 15% of the overall budget. A balanced budget is achieved thanks to the margins generated by our studies, but at the cost of a heavy workload for our teams. This means that we need to look at ways of making it less sensitive to the ups and downs of project life cycles.

**Denis Loyer**  
**Chairman**

- association ..... 3
- domains ..... 4
- initiatives ..... 5
- countries ..... 6
- lab ..... 11
- studies ..... 13
- financial report ..... 14
- governance ..... 15
- partners ..... 16

# editorial



# key figures



**12 directors and  
202 employees** (see opposite)

**5 permanent offices**

- Burkina Faso
- Ivory Coast
- Madagascar
- Mozambique
- Senegal

**Around thirty active projects**

**6 "biodiversity and  
development" landscapes**

- PONASI complex in Burkina Faso
- Comoé and Mabi Yaya in Ivory Coast
- Gilé and Namuli in Mozambique
- Anosy Region in Madagascar

**But also :**

Many other countries to be involved in 2023: Uganda, Sao Tomé, Namibia, Tanzania, etc.





### Forestry / natural resources

**Developing a concerted approach to the management of natural areas that are a priority for biodiversity and the climate**

Examples of actions :

- Mapping the dynamics of deforestation and *hot spots*,
- Raising awareness and mobilising the community around conservation issues on the outskirts of protected areas,
- Support for the management of Protected Areas: development of tools for monitoring deforestation, biodiversity inventories, anti-poaching measures (LAB),
- Support for the design and implementation of development and management plans,
- Reforestation, forest restoration,
- PSE (REDD+).

### Agriculture & markets

**Supporting producers and players in the various agricultural sectors with a global and critical approach aimed at promoting deforestation-free sectors and agriculture**

Examples of actions :

- Zero deforestation agriculture: modulated technical support for farmers: increase in added value per hectare, income security and diversification, support for sustainable supply chains (organic/fair trade certification),
- Development of Payment for Environmental Services models, benchmarks for creating market incentives (SAFART),
- Support for farmers' organisations to enhance the value of their production.

### Land use planning

**Consolidate concerted regional planning that fully integrates conservation and economic development issues**

Examples of actions :

- Diagnosis of territorial dynamics,
- Mapping the region's land use and supporting the updating of regional development plans,
- Development of Geographic Information Systems (GIS) on a regional scale,
- Participatory preparation and implementation of Local Development Plans,
- Land security: Delimitation of village territories, issue of land certificates.

### Bioenergy & waste

**Promote suitable energy production solutions, reducing pressure on wood resources and increasing added value linked to the processing of agri-food products**

Examples of actions :

- Waste-to-energy conversion using proven technologies (pyrolysis, biogas), enabling agro-industrialists (cashew, shea, mango, cotton, etc.) and groups of women producers (attiéké, shea, etc.) to produce the energy they need for their processing activities by reusing their waste, which has hitherto been unused, polluting and cumbersome,
- Improved carbonisation: Nitidæ works with charcoal producers to increase their production yields using simple techniques that require no investment.

# 3 cross-functional initiatives

## n'kalô

the economic expertise of African agricultural markets

**N'kalô provides market analysis and business advice, aimed in particular at addressing asymmetric information, a major problem theorised by J. Stiglitz, winner of the Nobel Prize in Economics in 2001**

Nkalo offers 2 main types of service :

- Weekly or monthly analysis bulletins for professionals in the value chains (cashew, shea, sesame, gum arabic, cocoa, groundnuts); SMS messages aimed primarily at producers, providing precise advice on marketing strategies for their production;
- Studies : carrying out studies for players in the agri-food sector: sector analysis, statistical studies on world trade, forward-looking studies, impact studies, market studies, business plans, feasibility studies (plant set-up), technical due diligence, traceability tools, support for certification, investment promotion studies.

## nitidæ lab

monitor, analyze and model territorial dynamics to manage projects and programs and evaluate impacts

**This laboratory brings together Nitidæ's technical and scientific expertise (remote sensing, spatial modelling, geographic information systems, soil science, forest ecology, biodiversity, hydrology, etc.) and works in close collaboration with scientific research (international research institutes and universities).**

Examples of action :

- Land use dynamics: mapping land use and past dynamics based on satellite image archives or future dynamics taking into account changes in human activities;

- Land degradation: mapping past land degradation at different scales and projecting it into the future, assessing the dynamics, impediments and regenerative capacities of an ecosystem, etc.
- Forests / REDD+: assessment of carbon stocks, deforestation/ degradation rates, greenhouse gas (GHG) emissions linked to deforestation/degradation, benefits of REDD+ projects for the climate, communities and biodiversity, etc.

## agrovalor platform

use agro-in- waste to supply clean energy to the transformation process

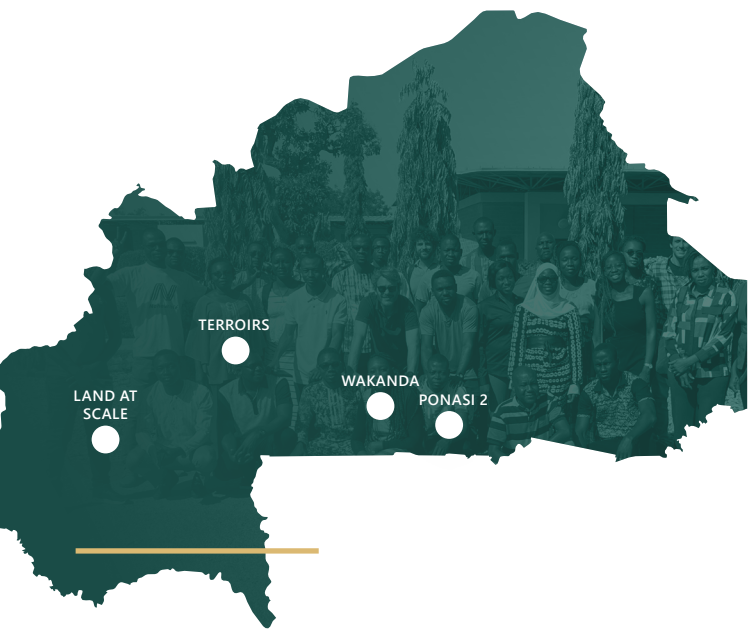
**Initially developed for cashew nut processors wishing to reduce their own cashew nut shell waste, the Agrovalor platform can now be applied to a wide range of industries (shea, mango, ginger, oil mills, non-food industries) and processes (pyrolysis as well as carbonisation, charcoal briquette production), using a variety of fuels: cashew nut shells as well as shea cake, cocoa pods, rice husks, etc.).**

The Agrovalor platform is based on a pragmatic vision of the needs and objectives of local industrial players, with solutions tailored to each one. The services on offer range from simple diagnostics to the design and implementation of the proposed solutions.



# Key figures

- 43 employees
- 3 offices : Ouagadougou, Po, Bobo Dioulasso, Léo
- 5 projects in progress
- Amounts committed in 2023 : **1,2 M€**



# burkina faso

In an increasingly fragile security context, the year 2023 confirms that Burkina Faso is a major country of intervention for the association. The amounts committed amount to 2 million Euros and represent 25% of the 2023 annual budget. Above all, Nitidae BF has started a new large-scale project (6 ME over 4 years) in the Sanguié and Boulkiemde Provinces with EU funding, offering Nitidae a new geographical anchor in an area currently free of security problems.

## Ponasi 2

### Intervention regions

Protected areas in the PONASI complex

Supporting the protection/improvement of the natural capital of the PONASI forest complex, and increasing the resilience of river-side communities.

#### Partners

EU - European Union - NATURAMA - Fondation des amis de la Nature - Conservation Justice - AGN - Les Anges Gardiens de la Nature - FFEM - French Global Environment Facility

■ [Find out more](#)

## Wakanda

### Intervention regions

Protected areas in the PONASI complex

Improving the living conditions of people living near the PONASI forestry complex and, more generally, to strengthen the area's resilience, particularly in the face of climate change.

#### Partners

NATURAMA - Fondation des amis de la Nature - CERDE - Centre d'Etudes et de Recherches sur le Droit de l'Environnement - EU - European Union - FFEM - French Global Environment Facility

■ [Find out more](#)

## Land at Scale

### Intervention regions

Protected areas in the PONASI complex

This project aims to improve food security and resilience of women and youth in the country by securing their access to land and strengthening land governance and management practices.

#### Partners

Netherlands Enterprise Agency - Oxfam Burkina-Faso - Observatoire national du foncier au Burkina Faso - ONF

■ [Find out more](#)

## Terroirs

### Intervention regions

Protected areas in the PONASI complex

With a view to food security/sovereignty, sustainable and equitable management of natural resources and greater social inclusion, the project is pursuing the following specific objectives: (i) a sustainable improvement in soil fertility and family farm incomes through the adoption of adapted agroecological practices; (ii) an improvement in forestry practices with a community dynamic and (iii) the development of economically and ecologically sustainable value chains.

#### Partners

INADES - CERDE - Centre d'Etudes et de Recherches sur le Droit de l'Environnement - APAD Sanguié - EU - European Union

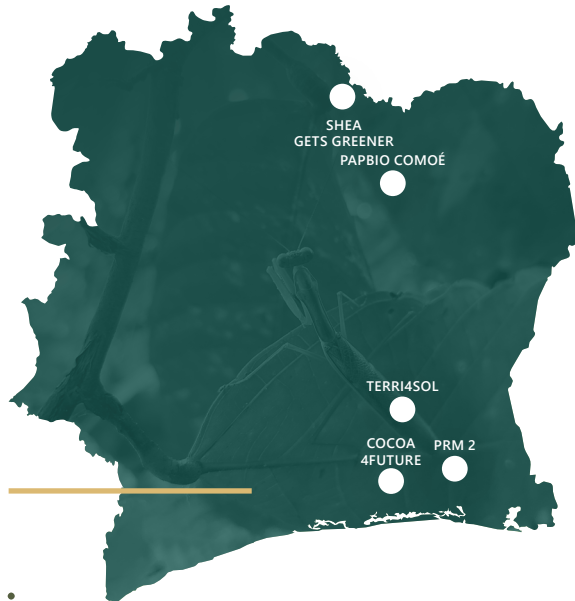
■ [En savoir plus](#)



# Key figures

- 39 employees
- 5 offices : Abidjan, Adzope, Bouaké, Dabakala, Ferkessedougou
- 7 projects in progress
- Amounts committed in 2023 : **2,7 M€**

Map © FreeVectorMaps.com



# ivory coast

2023 was a year of strong growth for Côte d'Ivoire. In addition to Nitidae CI's structuring projects (Mabi Yaya Programme, Pappbio Comoé), which continued thanks to major funding relays, new projects/studies were added, on various themes/geographies, reflecting the dynamism of Côte d'Ivoire but also Nitidae's recognition in the themes/expertise concerned. In 2023, Nitidae CI's budget is €2.63m, or 33% of the association's budget, compared with €1.7m in 2022.

## PRM2

**Intervention region**  
Mé region

Contribute to the resilience of countries through the concerted management of natural resources and the promotion of zero-deforestation agriculture at local level. The project is helping to improve living conditions for local people, protect the Mabi-Yaya forests and strengthen the resilience of the Mé region to climate change.

**Partners**  
Ministry for the Environment and du Développement Durable (MI-NEDD) - AFD - Agence Française de Développement - Secrétariat Exécutif Permanent REDD+ - Conseil Régional de la Mé - Alter Eco - Inprobois - Tropical Bois - Tranchivoire - CURAT

■ [Find out more](#)



## PAPBio Comoé

**Intervention region**  
Comoé region

To promote endogenous, inclusive and sustainable economic development in the peripheral areas of the Comoé National Park, mainly Mont-Tingui: support for the demarcation of Village Lands, drawing up and starting to implement Local Development Plans, development of Income-Generating Activities (IGA), etc.

**Partners**  
EU - European Union - Council Régional du Tchologo - Ministère du Plan et du Développement de Côte d'Ivoire - Acting for Life - Chigata - Vétérinaires Sans Frontières Belgique - N'Zi River Lodge - OPEF - Organisation professionnelle des éleveurs de Ferkessedou - FFEM - Fonds Français pour l'Environnement Mondial

■ [Find out more](#)

## Shea gets greener

**Intervention region**  
City of Bouaké and Korhogo

To integrate 5,400 artisanal shea collectors and producers in Côte d'Ivoire and Mali into a long-term commercial relationship with Savannah Fruits Company that generates real income opportunities for the shea collectors and producers and is accompanied by a diffusion of organic farming practices and production equipment that reduce the social and environmental externalities of the activity.

**Partners**  
Savannah Fruits Company - West Africa Trade & Investment Hub - WATIH - USAID

■ [Find out more](#)

## Cocoa 4Future (C4F)

**Intervention region**  
Mé region

Cocoa4future is a project developed by CIRAD, which wished to associate Nitidae with the implementation of certain activities in Côte d'Ivoire. Its aim is to improve the sustainability of cocoa farms while preserving the environment (limiting deforestation and restoring forest cover) by adapting cocoa farming systems to the changing context in Côte d'Ivoire and Ghana.

**Partners**  
EU - European Union - CIRAD - Inprobois - Alter Eco - APDRA - Scientific and Technical Forestry Committee - CST

■ [Find out more](#)

## Terri4Sol (T4S)

**Intervention region**  
Mé region

The project is designed to complement the Co-a4Future project and aims to work on low-carbon rural development scenarios. The idea is to co-construct low-carbon development scenarios with the beneficiary communities, implement them and then assess their climatic and socio-economic impact.

**Partners**  
CIRAD - FFEM - Fonds Français pour l'Environnement Mondial

■ [Find out more](#)

# Key figures

- 28 employees
- 3 offices : Maputo, Gilé, Gurue
- 4 projects in progress
- Amounts committed in 2023 : **1,15 M€**



mozambique

LUCCIA

In 2023, Nitidae's activities in Mozambique continued apace. No new projects, but consolidation of our activities in the 2 areas of intervention by the NGO in Zambézie: **Gilé and Mont Namuli.** The LUCCIA project has entered its cruising phase. A total of **€1.15 million has been committed to Mozambique in 2023, representing 14% of Nitidae's total budget.**



## Acamoz 2

**Intervention regions**  
Maputo and National Reserve of Gilé, Zambézie

Strengthen the cashew and macadamia value chains in order to increase the income of small-scale producers and preserve natural resources in a strengthened and more transparent institutional context, through 2 levers :

- Strengthening INCAJU to better integrate the cashew value chain into the international market in particular through the provision of reliable and transparent market information;
- Increase competitiveness and environmental and social sustainability. Social development of cashew production in Mozambique through a pilot project around the Gilé National Reserve in Zambézie

**Partners**  
AFD - Agence Française de Développement - INCAJU - Institut des Amandes du Mozambique - IAM

■ [Find out more](#)

## Namuli 2

**Intervention regions**  
Mount Namuli

The main objective is to set up a sustainable agricultural development model in the Namuli area to ensure the resilience of family farming and food security in the face of climate change, through the establishment of fair and sustainable agricultural value chains, and to ensure the conservation of Namuli's ecosystems and bio-diversity, which provide services on which local communities depend.

**Partners**  
Liechtensteinischer Entwicklungsdienst - LED - AgriMel - Observatório pelo Meio Rural - Eduardo Mondlane University - UEM - Governo Distrital de Gurué, Direcção Provincial da Agricultura e da Pesca, Serviço Provincial do Meio Ambiente.

■ [Find out more](#)

## Cascaju

**Intervention regions**  
Zambezia

Project to convert cashew nut by-products into energy in Mozambique.

**Partners**  
Institut des Amandes du Mozambique - IAM - AICAJU - Institut de formation professionnelle - IPOMA - Institut de formation professionnelle et d'études sociales Alberto Cassimo - IFPELAC- MOGROUPE - CN Caju - GIZ - EU - European Union

■ [Find out more](#)

## Mioqueim

**Intervention regions**  
Gilé National Park, province of Zambezia

The main objective of this research is to contribute to knowledge of the effects of forest fires on biodiversity and the ecosystem services provided by the Miombo forest in order to improve the performance of management and conservation operations in the Gilé National Park.

**Partners**  
Biofund - EU - European Union - Eduardo Mondlane University - UEM Mozambique's National Agency for Conservation Areas (ANAC).

■ [Find out more](#)

## Luccia

**Intervention region**  
All of Mozambique

The aim of this project is to provide technical assistance to the FNDS in its mission to support integrated decision-making for landscape management in Mozambique by continuing to develop the prototype LANDSIM platform for simulating, evaluating and redirecting as necessary land use and land use change processes in the country's key landscapes.

**Partners**  
AFD - Agence Française de Développement - Ministério da Agricultura e Desenvolvimento Rural de Moçambique - CIRAD - Fundo Nacional de Desenvolvimento Sustentavel - FNDS - Eduardo Mondlane University - UEM



# Key figures

- 53 employees
- 3 offices :  
Antananarivo, Ambilobe, Tolagnaro
- 4 projects in progress
- Amounts committed in 2023 :  
**691 K€**



In 2023, Nitidæ Madagascar continued its work in the Anosy region around the future Beampingaratsy Protected Area, but the slippage in the timetable for contracting and disbursing AFD funds for the Talaky Be project continued to handicap the teams. In the meantime, a new partnership has been signed with a Rio Tinto subsidiary for a pilot phase involving the reforestation of several hundred hectares - in the Anosy region - for carbon sequestration purposes. In the North, the anchovy industry project in the Diana region is drawing to a close, and some of the staff have been redeployed to the South. In total, Nitidæ Madagascar committed 691 K€ in 2023, representing 9% of the association's budget.



## EPS

**Intervention region**  
Anosy region

This project, to be carried out with the Rainforest Trust, is a continuation of Talaky, with a focus on the protection of biodiversity through the definitive protection of Beampingaratsy as a protected area.

**Partners**  
Rainforest Trust - AFD - Agence French Development Agency

■ [Find out more](#)

## Madanaca

**Intervention regions**  
District of Ambilobe, region of DIANA

Improve the productivity and rentability of the anchovy value chain by building capacity, grouping players and renewing plantations, thereby increasing the incomes of the households involved.

**Partners**  
GIZ - Ministry of the Environment, de l'Ecologie et des Forêts (Madagascar) - Ministère de l'agriculture, de l'élevage et de la pêche (Madagascar)

■ [Find out more](#)

## Talaky

**Intervention region**  
Anosy region

- Strengthening conservation activities by continuing the process of creating the New Protected Area. (NAP) of Beampingaratsy,

- Develop sustainable alternatives to the use of forest resources - to respond to the needs of our customers.

- Strengthening the position of local authorities as key players to mastering regional planning.

**Partners**  
Agrisud International - AFD - Agence Française de Développement - Anosy Regional Council - Ministries and decentralised departments

■ [Find out more](#)

## RTNS

**Intervention region**  
Anosy region

Create community-accepted and sustainable carbon sinks through collaboration between Rio Tinto and Nitidæ in the 4 project communes: Mahatalaky, laboakoho, Manantenina and Ampasimena on the right bank of the Manampanihy.

**Partners**  
Rio Tinto Natural Solutions

# madagascar

# Key figures

- 6 employees
- 5 projects in progress
- Amounts committed in 2023  
**299 K€**



senegal

Although Senegal is still a recent country of intervention for Nitidae, 2023 was marked by a dynamic diversification of activities. In addition to the Propac and Tefess projects, which are still being implemented, the teams have started providing support and commercial intermediation services for agribusiness operators in the Sine Saloum area, using a number of funds from Enabel.

## Propac

**Intervention region**  
Sine Saloum

Promoting models of Professional Agricultural Organisations for fairer marketing and a resilient agricultural sector conducive to the emergence and development of an inclusive and sustainable agri-food sector in the Sine Saloum.

**Partners**  
Solidagro - 3AP - Belgian Development Agency Development (CTB-ENABEL) - Broederlijk Delen

■ [Find out more](#)



## Tefess

**Intervention region**  
Sine Saloum

Project carried out in partnership with the Senegalese NGO Nebeday (lead), which aims to sustainably increase the resilience and adaptation of communities in the Sine Saloum to ecological and climatic vulnerability.

**Partners**  
Nébéday

■ [Find out more](#)

## Anarise

**Intervention region**  
Sine Saloum

Support for the development of the cashew nut industry under the special initiative for employment and the strengthening of SMEs in Senegal through training.

**Partners**  
Agriculture and Finance Consultants - AFC - GIZ - Federal Ministry for Economic Cooperation and Development - BMZ

■ [Find out more](#)

## Income

**Intervention region**  
Sine Saloum

The main objective of this service is to set up, deploy and support the implementation of inter-individual commercial intermediation services tailored to the context and needs of players in the priority value chains of the central agropole. This service should facilitate the creation of around 200 sustainable win-win business relationships worth a total of €6 million over the 2 marketing years 2023/24 and 2024/25.

**Partners**  
Belgian Development Agency - CTB-ENABEL - EU - European Union - Fonds National de Développement Agro-Sylvo-Pastoral du Sénégal - FNDASP

■ [Find out more](#)

## SYSEN

**Intervention region**  
Sine Saloum

Setting up and deploying a pool of skills in commercial intermediation services, strengthening multi-link territorial initiatives and developing a reference database of supply and demand.

**Partners**  
Belgian Development Agency - CTB-ENABEL - EU - European Union - Fonds National de Développement Agro-Sylvo-Pastoral du Sénégal - FNDASP

■ [Find out more](#)

# Lab

During 2023, the Nitidæ Lab team continued its research and technical and scientific support for Nitidæ's projects. Significant advances were made in the use of technology from drone acquisitions and online reporting and decision-making tools.

The main activities were as follows :

The N'Lab welcomes Claire Auger as a PhD student, co-supervised with the Museum National d'Histoire Naturelle. Claire will be working on the interactions between agricultural practices and biodiversity in tea fields on the outskirts of the Kibale National Park in Uganda. The thesis will be based on survey methodologies, floristic and faunistic inventories and the use of remote sensing data. It aims to support the **creation of two new "Wildlife Friendly" labels** that gives economic value to the commitments made by tea producers to protect the local wildlife.

The N'Lab team was very busy in 2023, with the completion in end of the year of the LUCCIA project (Land use and Climate Change Impact Assessment in Mozambique), financed by the AFD and conducted in partnership with a CIRAD team. The aim of this ambitious project was to develop a spatialised land dynamics tool focusing on farming households, with a view to assisting the Mozambican government in its decision-making process. The work was carried out successfully and culminated in two workshops, the last of which was held in early December and brought together more than thirty people from various institutions (e.g. the Ministry of Protected Areas and Risk Management) and universities (the Eduar University, the University of the South, etc.).

Launch of phase 2 of the **ANAGROCLIM project** to improve knowledge of orchards in Côte d'Ivoire and develop a methodology for agroclimatic forecasting of cashew nut production in Côte d'Ivoire. This project, managed by Ulrich, promises to be N'Lab's flagship project for the next few years. Marc Bouvier will be joining the team at the start of the 2024 academic year.

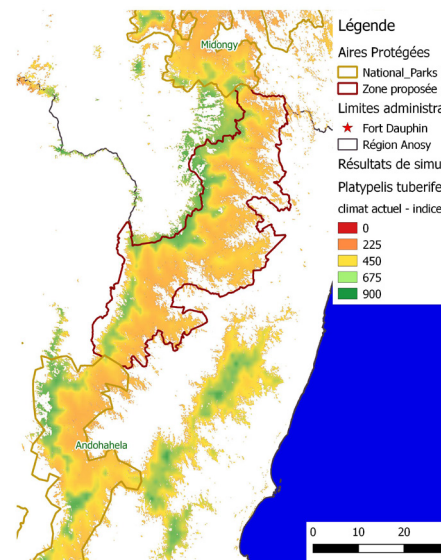
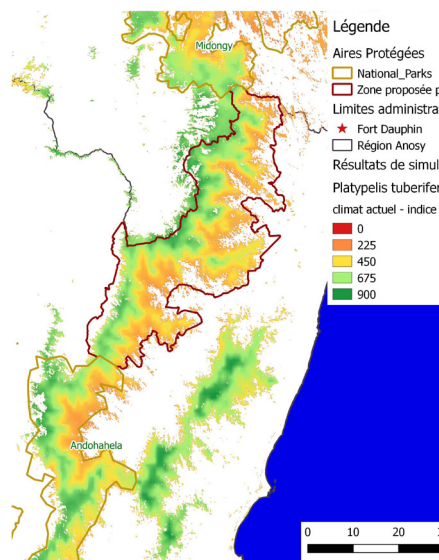
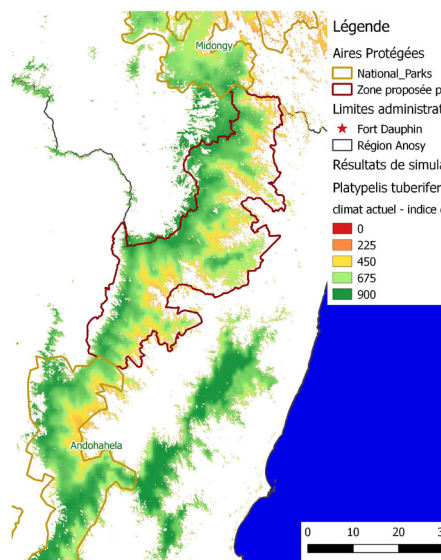
As part of the PRM 2 project for the Mabi Yaya National Research Centre in Côte d'Ivoire, Ambroise completed a work placement with N'Lab on **mapping wood biodiversity** using remote sensing tools and data. The study used data from floristic surveys carried out in the field by Nitidæ and a methodology developed by a CIRAD team (BiodivMapR package).

As part of the study on the effect of fire on the Miombo in the Gilé National Park, carried out with the University of Maputo and funded by BIOFUND, Sá and Fred supervised a student from the University of Maputo to carry out **analyses of fire regimes and produce a fire risk map** for the Park. The aim is to help the introduction of a fire management system by the Park team.

Ongoing support is provided to Valrhona to achieve their carbon footprint, with a particular focus on **accounting for changes in land use and associated emissions** on producers' geo-referenced plots. Inventories have also been carried out on some of their plantations. The adventure with Valrhona will certainly continue for a long time to come, especially with the European regulations that will apply to chocolate makers!

The Lab team co-authored the chapter Forest Dynamics: Carbon, Drivers, and Trends in the book **The New Natural History of Madagascar**, from famous researcher Steven M. Goodman

N'lab attended the **Scientific Conference of the IUFRO Forest Environment Division** in Portugal at the end of October to present various research projects: a method for identifying priority areas and strategies for restoring degraded land in Mozambique, developed as part of Fred's thesis, and the study on modelling the future distribution of fauna species in Madagascar.



Current and future habitat of the amphibian *Platypelis tuberifera* estimated from WorldClim climate data in southern Madagascar (TALAKY project, Madagascar)

# Bioenergy

As the Nitidae bioenergy team continues to develop, 2023 will finally see the completion of a cashew nut shell power plant. As part of the GAZEL project, a gas-generating plant has been commissioned at the Tolaro Global factory in Parakou, Benin. The 180 kW plant has the capacity to abrade 6 tonnes of hulls per day and supply 95% of the electricity needs of a plant processing 4,500 tonnes of nuts per year.

We are continuing to develop ways of converting agricultural waste into electricity, opening up to other biomass sources, including trials with rice husks and an installation planned in Senegal for 2024.

2 videos were also produced to explain how cashew nut shells and other agricultural waste can be used in a gas-fired power plant. They were distributed in Dakar, while Cheikh Loum presented our advances in terms of shell recovery to the industry's stakeholders at the ACA's annual forum.

- [Watch the first video here](#)
- [Watch the second video here](#)

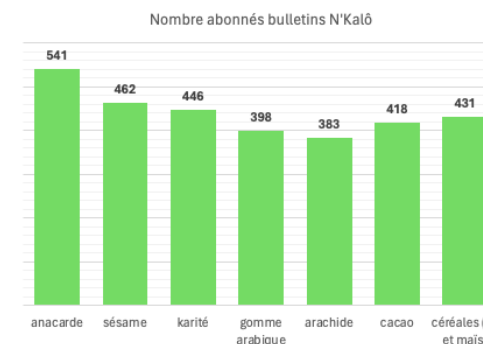
As part of the biostar project, the Bobo team is assisting equipment manufacturers **with the installation and commissioning of equipment for upgrading cashew nut hulls and shea cakes** for use in the food industry, processes for the production of dried mango and shea butter. Innovative solutions are being developed and beneficiaries are being trained in their use and maintenance, to ensure that they are properly adopted.

Bioenergy/waste expertise is also, and above all, at the heart of the Group's strategy. Nitidae's major landscape and value chain projects. In Burkina Faso, the Wakanda/Ponasi project involves **solar kits, improved productive stoves and improved carbonisation**. Shigets, process improvements and the development of new. In Mozambique, at Acamoz, cashew nut waste is once again being recycled!

# Nkalô

In 2023, the number of Nkalo subscribers remained stable at around 3,000 for all channels.

Details below :



Continued development of the dissemination of information via whatsapp to reach upstream players (producers and traders), using the whatsapp community tool. Whatsapp communities are now present in most of the countries where we have analysts

Internal discussions to monitor the soya market, as this sector has been developing for some time in West Africa.



---

# studies

---

**Over the course of 2023, Nitidæ's research department has carried out a growing number of projects for an increasingly wide range of clients and partners, on a wide range of subjects: feasibility studies and project evaluation on behalf of public donors (AFD / FFEM, PROPARCO) and private players (Mirova, Savannah Fruit, Valrhona, Symrise, SIDI, aDrya da), supporting companies in structuring their sectors (measure of forest/climate impact, improved process, commercial opportunities), but we also carry out strategic studies on behalf of public donors (EU, World Bank), such as the definition of the agriculture/forestry roadmap in Mozambique, the development of low-carbon scenarios and their climate/economic impact in Côte d'Ivoire, and support for sectoral public policies**

A few examples below illustrate the vitality of the Nitidæ study group :

---

## Carbonex

Consultancy services to support a targeted analysis on the implementation of NDCs - Forest/Cocoa and National Climate Infrastructure in Côte d'Ivoire.

---

## Sheapes

Study on the traceability, transparency and sustainability of the cocoa sector in Cameroon.

---

## Emival

Technical assistance to Valrhona for the assessment of GHG emissions, projects, etc. compensation and the implementation of a carbon/biodiversity strategy (Belize, Brazil, Côte d'Ivoire, Dominican Republic, Ecuador, Ghana, Grenada, Haiti, Indonesia, Madagascar, Peru, Sao Tome and Principe).

---

## Soignon

Setting up an 'outgrowers' network of onion producers in Senegal. As part of an investment project by AATIF, in collaboration with IFC, in the first onion dehydration plant in Sub-Saharan Africa, a project led by the company SAF Ingrédients, AATIF commissioned a study via its technical assistance facility to build the capacity of SAF-Ingrédients' newly-created procurement team.

---

## Finstrat

Build an environmental investment strategy for Alterfin by identifying risks when investing in agricultural value chains. It should help Alterfin to better manage E&S risks when investing in agricultural value chains and to better understand the main negative environmental impacts and ways to mitigate them.

---

## Greenhoods

Final evaluation of the FGEF contribution to the Livelihoods investment fund. The aim of the study was not only to evaluate the achievements of AFD's financing of the Livelihoods fund in terms of family farming, but also to assess the relevance of 2 specific projects in terms of impact (climatic, ecological, social, etc.).

---

## B4moz

As part of the "The EU Biodiversity" facility for Life - B4Life", Nitidæ provided technical assistance to strategically guide the future formulation of an EU-AAP-24 action to support the B4Life project.

---

## Moshew

Project to support public policies and companies in the African cashew value chain to ensure a sustainable, resilient and performant value chain. There are a number of associated actions and objectives: advising and strengthening African governments in the definition of policies and in dialogue on the cashew sector; supporting value chain stakeholders and disseminating knowledge on the determinants of production; analysing the social, environmental and quality impacts and issues in the cashew sector; improving production systems.

---

## Vanireg

To protect and regenerate nature, Unilever and its local partners are implementing a sustainable vanilla supply programme in the SAVA region of Madagascar. The programme is called Fandriaka II/Vanilla for Change 2020-2024 and is being carried out in collaboration with GIZ. They are currently designing a new phase of the programme, which will run from 2024 to 2028.



# financial report



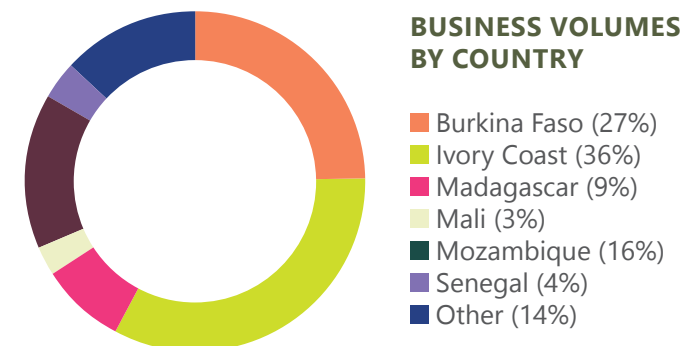
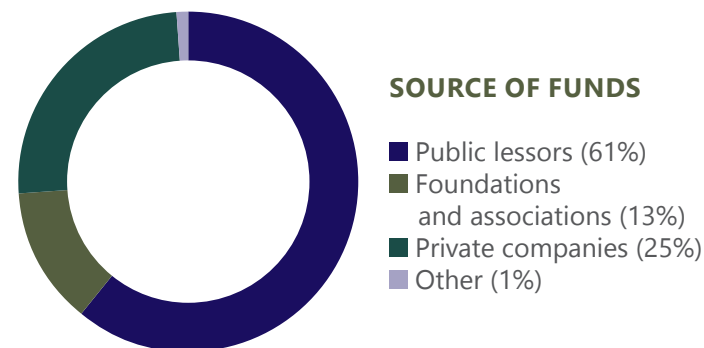
The year 2023 will once again see significant growth in the business volume compared with 2022.

The association's total budget was **€8,046,023**, an increase of 10% compared with 2022. Profit for the year was €27,668, including a research tax credit of €72,159. 85% of expenditure was devoted to the association's interventions, demonstrating Nitidæ's continued commitment to its missions.

In terms of the countries in which we operate, the volume of business in Burkina Faso remained stable despite the launch of the Land-at-scale project financed by the Netherlands Enterprise Agency (RVO) and the Terroirs project financed by the European Union. However, the figures have been impacted by difficulties in finding contractual co-financing for contracts with the European Union.

Business in Côte d'Ivoire is set to expand significantly in 2023, particularly with the completion of the EU-funded Pappio project and the launch at 'full speed' of the Anagroclim 2 service with the CCA (Conseil Coton Anacarde), Forest-for-Future with EFI and Shigets with the Savannah Fruits Company.

Activity in Mozambique was marked by the end of the Luccia service financed by the AFD and the transition between the first and second phases of the Acamoz project, which will last 4 years. The Namuli area shows good prospects in terms of financing, with the first collaboration with the LED - Liechtenstein Development Service for 2024.



The reduction in business volume in Madagascar (-19%) is explained in particular by the end of the Talaky project and the transition to the Talalky Be project for a period of 4 years.

For the consultancy part, i.e. the services managed by the head office experts, continued its momentum. The turnover achieved reached €807,000.

The proportion of activities using funds from private sources has risen from 13% to 25% compared with 2022. There are also more activities financed by foundations such as Croda Foundations with the Rezobio project in Côte d'Ivoire and a new contract with Rain Forest Trust in Madagascar.

In conclusion, Nitidæ has maintained its growth momentum in 2023, with an expansion of its activities in targeted countries. The financial results are solid overall, although particular vigilance is required, with an increase in the total budget and a positive result for the year. Nitidæ has managed to keep administrative and structural costs down, demonstrating its operational efficiency.

# balance sheet

	Net at 31/12/2023	Net au 31/12/2022
<b>BALANCE SHEET ASSETS</b>		
FIXED ASSETS	354 508	386 325
CURRENT ASSETS	18 557 032	12 665 677
Receivables	14 510 774	9 166 496
Availability	4 033 495	3 313 343
Prepaid expenses	12 763	185 838
<b>GRAND TOTAL</b>	<b>18 911 540</b>	<b>13 052 002</b>
<b>BALANCE SHEET LIABILITIES</b>		
ASSOCIATION FUNDS	709 312	681 644
Prepaid expenses	681 644	567 001
Net profit for the year	27 668	114 643
PROVISIONS AND DEDICATED FUNDS	0	64 080
DEBTS	18 202 229	12 306 278
Other liabilities	821 964	1 022 112
Deferred income	17 380 265	11 284 166
<b>GRAND TOTAL</b>	<b>18 911 540</b>	<b>13 052 002</b>

# income statement

	at 31/12/2023 8 023 838	at 31/12/2022 7 278 464
<b>OPERATING INCOME</b>		
Goods sold	29 695	22 727
Sales of goods and services	1 975 867	1 265 855
Operating subsidies	5 928 842	5 988 923
<i>of which Government grants and operating subsidies</i>	855 106	5 436 296
<i>of which Patronage &amp; Partnerships</i>	5 073 736	552 627
Write-backs of depreciation and provisions, expense transfers	87 964	0
Contributions	1 020	831
Other products	450	128
<b>FINANCIAL PRODUCTS</b>	<b>14 751</b>	<b>21 849</b>
<b>EXTRAORDINARY INCOME</b>	<b>7434</b>	<b>1642</b>
<b>TOTAL INCOME</b>	<b>8 046 023</b>	<b>7 301 955</b>
<b>OPERATING EXPENSES</b>		
Purchase of goods		
Change in inventories of goods		
Other purchases and external charges	3 597 150	2 867 179
Financial aid	906 260	1 158 679
Taxes and similar payments	198 080	174 421
Wages and salaries	2 439 336	2 074 758
Social security charges	722 763	692 422
Depreciation, amortisation and impairment	153 777	241 677
Charges to provisions	0	55 000
Other expenses	28 970	1 381
<b>FINANCIAL EXPENSES</b>	<b>28 093</b>	<b>20 789</b>
<b>EXCEPTIONAL EXPENSES</b>	<b>16 085</b>	<b>7 501</b>
<b>INCOME TAX</b>	<b>-72 159</b>	<b>-106 496</b>
<b>TOTAL EXPENSES</b>	<b>8 018 355</b>	<b>7 187 311</b>
<b>SURPLUS</b>	<b>27 668</b>	<b>114 644</b>

# governance

## Nitidæ 2022 Board of Directors

### Office

#### Denis LOYER – Chairman

Retired, previously Deputy Director of Operations then Director of the Environment and Natural Resources Department at AFD

#### Emmanuel GONON – Vice-Chairman

Director of the European Geopolitical Observatory and head of project to DMI Associates

#### Olivier LANGRAND – Treasurer

Executive Director of CEPF (Critical Ecosystems Partnership Fund)

### Directors

#### Marion BAYARD

Project Manager DMI Associates - Lyon

#### Frederick BOLTZ

Independent consultant, formerly Managing Director of Rockefeller Foundation on ecosystem issues

#### Michel GUGLIELMI

Professor of Agricultural Economics and Policy at ISARA-LYON (Political and International Exchanges)

#### Durley MIRANDA

Consultant and trainer in international relations, development-Sustainability and CSR

#### Michel PERRIER

Retired, formerly Director of Quality, Safety and Environment Training and Institutional Relations at the CCI Savoie

#### Sylvie PISLAR

Territorial Engineer - Lyon Metropolitan Area

#### Pauline PLISSON

Director, Innovation & technology Consulting - Naldeo Technologies & Industry

#### Harison RANDRIARIMANANA

Retired, formerly Minister for Agriculture, Livestock and Fisheries and Fisheries, and Minister for the Environment, Forests and Tourism in Madagascar

# belonging

## We are a member of :

- 1% for the Planet (association approved by the collective)
- French Initiative for Sustainable Cocoa - (IFCD) - NGO College
- Rethinking supply chains' collective (Fondation pour le Progrès de l'Homme FPH and GIZ)
- Lyon, a fair and sustainable city
- UEBT - The Union for Ethical BioTrade
- IFOAM
- FairForLife Standards Review Committee
- Fair Trade France
- Max Havelaar France
- GTD - Desertification Working Group





# Partners

## Partners in the field

- ActiActing For Life – AFL
- Action Contre la Faim – ACF
- African Cashew Alliance
- Afrik'Nature
- Agence Nationale de la Promotion Rurale et du Conseil Agricole – ANPROCA (Guinée)
- Agence Nationale de la Sécurité Sanitaire des Aliments – ANSSA (Mali)
- Agramondis
- AgriMel
- Agrisud International – ASI
- Agronomes et Vétérinaires Sans Frontières – AVSF
- Anges Gardiens de la Nature – AGN (Burkina-Faso)
- APDRA
- Association Ivoire Eco Responsable – AIER
- Association Malagasy pour le Développement Economique, Social et Environnemental
- A.M.A.D.E.S.E. (Madagascar)
- Association Malienne pour la Sécurité et la Souveraineté Alimentaires – AMASSA (Mali)
- Association Munyu
- Association des Organisations Professionnelles Paysannes – AOPP (Mali)
- Association pour la Promotion de la Sécurité et de la Souveraineté Alimentaires au Burkina – APROSSA (Burkina-Faso)
- Associação Rural de Ajuda Mútua – ORAM (Mozambique)
- Atelier de Soudure Industrielle Somtinda – ASIS
- Bioprotect
- C&E

## Financial Partners

- AAK (Burkina-Faso)
- Agence de l'Eau Rhône Méditerranée Corse – AERMC
- Agence française de développement – AFD
- Agence Nationale des Aires de Conservation – ANAC (Mozambique)
- Agence Nationale de la recherche et de la Technologie – ANRT
- Agence de la Transition Ecologique – ADEME
- Agroforestry Technical Assistance Facility – ATAF
- Agronomes et Vétérinaires sans Frontières – AVSF
- Association recherche Qualité Environnementale – ARQE
- Banque Chinoise de Développement
- Banque Mondiale / Forest Carbon Partnership Facility – FCPF Readiness Fund
- Barry Callebaut
- Bjorg Bonnetterre et Compagnie
- Blue Venture Conservation (Madagascar)
- Centre du Commerce International – ITC
- Centre Technique de coopération Agricole et rurale – CTA (Côte d'Ivoire)
- COLEACP
- Common Fund for Commodities – CFC
- Comité Français pour la Solidarité Internationale – CFSI

## Scientific Partners

- Bissau Economics Lab – BELAB
- Centre de Coopération Internationale en recherche Agronomique pour le Développement – CIRAD

- Cargill
- Centre de Formation Professionnelle Agricole – CRFPA (Madagascar)
- Centre Ecologique Albert Schweitzer – CEAS (suisse)
- Centre Francophone de Recherche Partenariale sur l'Assainissement, les Déchets et l'Environnement – CEFREPADE
- Centre Technique de Coopération Agricole et rurale – CTA (Côte d'Ivoire)
- CHIGATA (Côte d'Ivoire)
- China Council for the Promotion of International Trade
- CLEXTRAL
- Commerce équitable France
- Commission des Forêts d'Afrique Centrale – COMIFAC
- Confédération Paysanne du Faso – CPF (Burkina-Faso)
- Conseil Coton Anacarde de Côte d'Ivoire
- Conseil Régional du Tchologo
- Conservation Justice (Burkina-Faso)
- Cool Earth
- Côte d'Ivoire Energies
- CottonConnect
- Cultivating New Frontiers in Agriculture – CNFA (Etats-Unis)
- Ethiquable
- Eranove
- Fédération Nationale des Organisations Paysannes – FENOP
- FENPROSE
- Fonds Interprofessionnel pour la Recherche et le Conseil Agricoles – FIRCA (Côte d'Ivoire)
- Funteni Installations et Conseil (Burkina-Faso)
- Gaiachain (Grande-Bretagne)
- Groupe Energies Renouvelables, Environnement et Solidarités – GERES

- Conseil Coton Anacarde (Côte d'Ivoire)
- Délégation pour l'Action Extérieure des Collectivités Territoriales – DAECT
- Department for International Development UK – DFID
- ECOOKIM (Côte d'Ivoire)
- EGIS
- European Forest Institute – EFI (UE)
- Expertise France
- Fondation de France
- Fonds Français pour l'Environnement Mondial – FFEM
- Fonds Interprofessionnel pour la recherche et le Conseil Agricoles – FIRCA (Côte d'Ivoire)
- Fondation pour le Progrès de l'Homme – FPH
- Fondation pour la recherche sur la Biodiversité – FRB
- Fondation Internationale pour la Gestion de la Faune – IGF
- Fonds International de Développement Agricole – FIDA
- Global Shea Alliance – GSA (Etats-Unis)
- Institut national d'études supérieures agronomiques de Montpellier – SUPAGRO
- International Fertilizer Development Center – IFDC (Etats-Unis)
- Investment and Exports Promotion Agency of Mozambique – APIEX
- La Communauté du Pacifique
- Legado (Etats-Unis)
- L'occitane en Provence

- Centre d'Etudes et de Recherches sur le Droit de l'Environnement – CERDE
- Climate Technology Center & Network – CTCN
- Comité Scientifique et Technique Forêt – CST
- Institut Supérieur d'Agriculture Rhône-Alpes – ISAR
- Institut de recherche pour le Développement – IRD
- Université d'Abidjan Félix Houphouët-Boigny – Laboratoire de géomatique CURAT

- IMF LSK (Burkina-Faso)
- INCAJU (Mozambique)
- Interprofession du sésame au Burkina-Faso – INTESEB
- Ivory Cashew Nuts – ICN
- Kingdom
- La Compagnie Fruitière – SCB
- Lupa (Mozambique)
- Lycée Professionnel Régional NAZI BONI (Burkina-Faso)
- Madagascar National Parks (MNP)
- MPE-SA (Madagascar)
- MTN (Guinée Bissau)
- Naturama – Fondation des amis de la Nature (Burkina-Faso)
- N'Zi River Lodge
- Office National pour l'Environnement – ONE (Madagascar)
- OLAM
- Organisation Professionnelle des Eleveurs de Ferkessédougou – OPEF (Côte d'Ivoire)
- Orange Mali & Côte d'Ivoire
- Organisation de Soutien pour le Développement Rural – OSDRM (Madagascar)
- Positive Planet Réseau Ouest Africain des Céréalières – ROAC
- Rainforest Trust
- S2 Service
- Secrétariat Exécutif Permanent REDD+ – SEP REDD+ (Côte d'Ivoire)
- The Sustainable Trade Initiative – IDH
- Union Fédérale des Consommateurs de Côte d'Ivoire – UFCCI
- Vétérinaires sans Frontières Belgique – VSFB (Belgique)
- VIAMO (Burkina-Faso)
- Wildlife Conservation society – WC

- LuxDev (Luxembourg) Lutheran World relief – LWR (Etats-Unis)
- Métropole de Lyon
- Ministère de l'Agriculture, de l'Elevage et de la Pêche (Madagascar)
- Ministère de l'Environnement et du Développement Durable – MINEDD (Côte d'Ivoire)
- Ministère de l'Europe et des Affaires étrangères – MEAE
- Ministère du Cadre de Vie et du Développement Durable du Bénin – MCVDD
- Ministère du Pétrole, de l'Energie et des Energies Renouvelables – MPEER
- Ministère du Plan et du Développement de Côte d'Ivoire
- OCEF Facility
- Organisation Mondiale du Commerce – OMC
- Pur Projet
- Recyclivre
- Région Auvergne-Rhône-Alpes
- Région Haute Matsiatra (Madagascar)
- Stockholm Environment Institute – SEI (suède)
- Terra Firma
- The Savannah Fruits Company (Ghana)
- The Tenure Facility
- Union européenne – UE
- USAID (Etats-Unis)
- USDA (Etats-Unis)

- (Côte d'Ivoire)
- Université d'Antananarivo – Institut et observatoire de Géophysique d'Antananarivo
- IOGA (Madagascar)
- Université Edouardo Mondlane – département Agro et Foresterie FAEF (Mozambique)
- World Resources Institute



## Contact us

### **Head Office - Lyon**

29, rue Imbert-Colomès  
69001 Lyon - France  
+33 (0)9 73 66 10 17

### **Montpellier**

Maison de la télédétection  
500, rue Jean-François Breton  
34 000 Montpellier – France

### **Representation Burkina-Faso**

Boulevard Général Charles de Gaulle,  
en face Juvénat Saint Camille Filles,  
rue 28.291 villa N°04 à côté du musée national  
Ouagadougou - Burkina-Faso  
+226 63 40 29 48

### **Ivory Coast Office**

8<sup>ème</sup> étage Tour Wedge Les caddies  
Cocody-Riviera Golf - Abidjan - Côte d'Ivoire  
+225 22 43 71 84

### **Mozambique Office**

Avenida Agostinho Neto, n°16  
Maputo - Mozambique  
+258 87 00 43 558

### **Madagascar Office**

Lot VE 26 L, Ambanidia  
101 Antananarivo - Madagascar  
+261 (0) 34 74 912 55